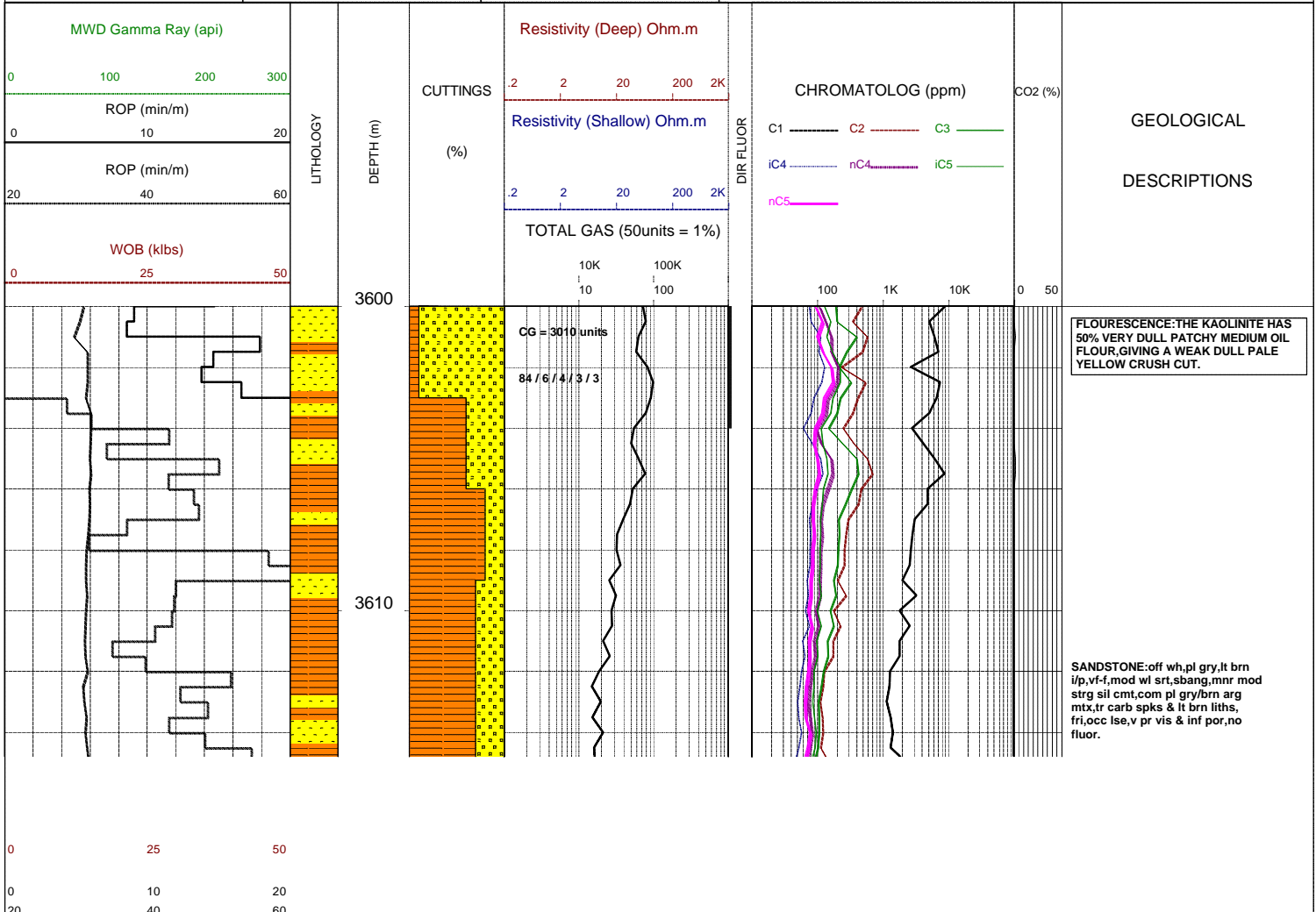
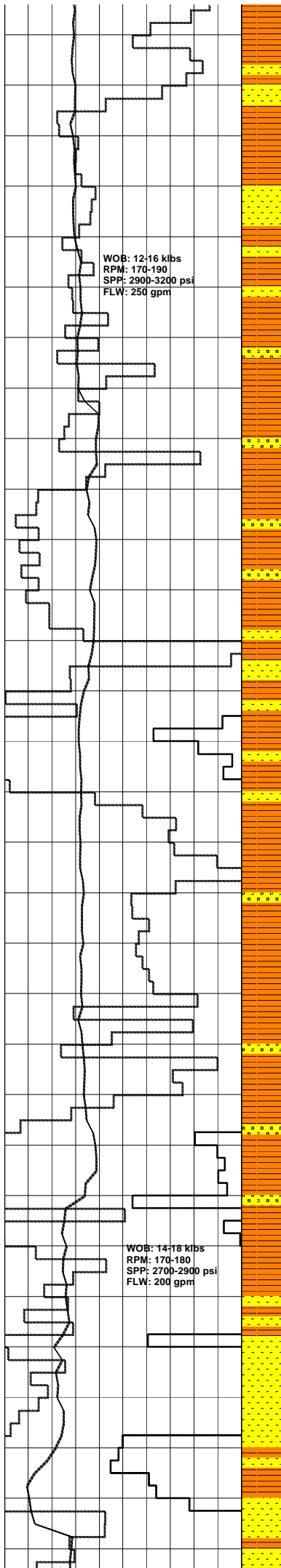


GLENAIRE 1 ST1

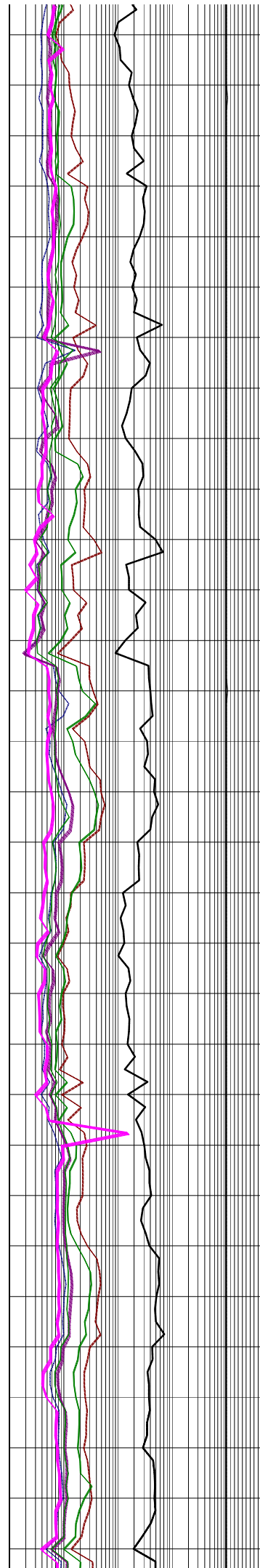
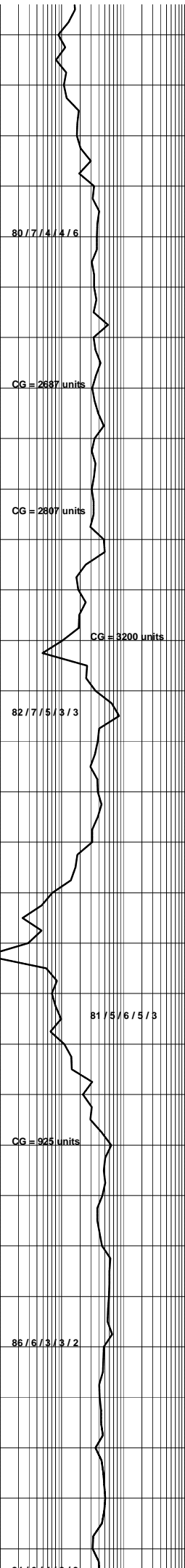
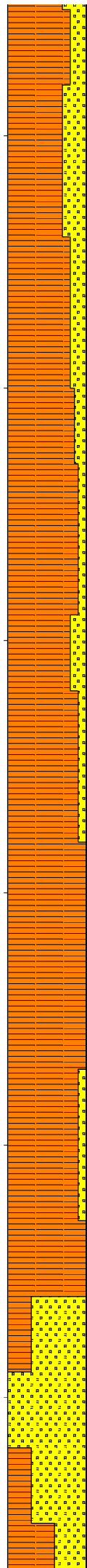
Field : aaa	Kelly Bushing : PEP 160	Rig : ENSIGN 32	Open Hole:	Cased Hole:	Loggers : J.SUTTON
Block: bbb	Ground Level : STATUS	Spud Date : 08/09/2006	17.5" (12.25") 307m	13.375" (9.625") 303.5m	N.LUIS
State : VICTORIA	GRS80 Ellipsoid MGA94 Zone54 :	TD Date : XX/XX/2006	12.25" (8.5") 1255m	9.625" (7.0") 1252m	J.TRETHEWEY
Country : AUSTRALIA	Lat. : 37°34'47.03S	Total Depth : jjj	8.5" 3006m	7.0" 2999m	HO MINH HAU
Scale : 1/ 200	Long. : 140°59'52.25E	Final Status : kkk	6.0" eee	hhhh iii	ccc

LITHOLOGY Conglomerate Coarse Sandstone Med Sandstone Calcareous Sst Silty Sandstone Siltstone Carb. Siltstone Calc. Siltstone Clay Limestone Dolomite Coal Anhydrite Gypsum Igneous Volcanic Metamorphic Cement	ACCESSORIES Pyrite Siderite Glauconite Feldspar Mica Ferrous Chert Calcareous Dolomitic Carbonaceous Lithoclast Breccia Foraminifera Corals Inoceramus Bryozoa Plant remains Fossils	DRILLING DATA Casing Shoe Bit Trip Wiper Trip Core DST Deviation Survey MUD DATA MW - Mud Weight (lb/gal) FV - Funnel Viscosity (s/qt) PV - Plastic Viscosity (cps) YP - Yield Point (lb/100ftsq) Gel - Gel Strength (10sec) WL - Water Loss (cc/30min) pH - Acidity / Alkalinity Ck - Cake (32nd/inch) O/W/S - Oil / Water / Solids Cl - Chlorides (mg/L) K+ - Potassium (mg/L) Rmf - Res. Mud Filtrate (ohmm)	ABBREVIATIONS BOPD - Barrels of Oil Per Day BWPD - Barrels of Water Per Day CG - Connection Gas CO - Circulate Out COND - Condensate c/c - Crush Cut DST - Drill Stem Test FLOW - Flow Rate (gal/min) GCM - Gas Cut Mud GCW - Gas Cut Water GTS - Gas To Surface INJ - Injection of Mist (bbls/hr) LCM - Lost Circulation Material MMCFD - Million Cubic Feet / Day NGTS - No Gas To Surface NOTS - No Oil To Surface NFTS - No Flow To Surface OCM - Oil Cut Mud OG - Over Gauge OH - Open Hole OTS - Oil To Surface Q - Flow Rate REC - Recovery FLUOR - Fluorescence ROP - Rate Of Penetration RPM - Revolutions Per Minute RTSTM - Rate Too Small To Measure Rw - Resistivity water r/r - Ring Residue SCFM - Standard Cubic Ft/Min (air) SGCM - Slightly Gas Cut Mud SPM - Strokes Per Minute SPP - Stand Pipe Pressure SWC - Side-Wall Core TG - Trip Gas WOB - Weight On Bit
---	---	--	--





3620
3630
3640
3650
3660
3670



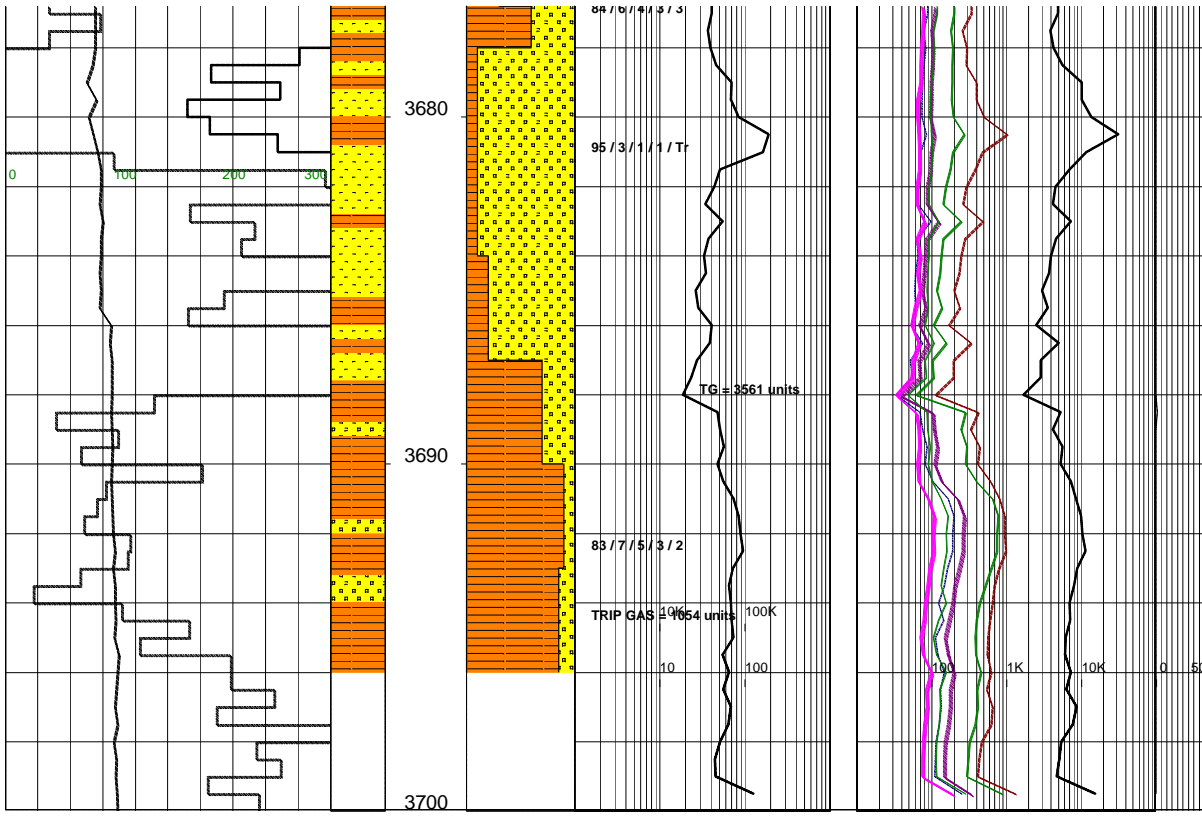
SILTY CLAYSTONE: med-dk brn/gry, mnr dk gry, aren i/p, occ micmic, mnr carb spks, tr off wh liths, mod hd-hd, sbbkly.

SANDSTONE: med dk gry, dk gy, tr pl gry, lt gy, vf-crs grs, pr srt, sbang -sbrnd, arg mtx, tr sli calc cmt, tr carb spks, tr liths, tr micmic, pr vis & inf por, no fluor.

SILTY CLAYSTONE: dk-v dk gry, dk gry/brn, occ med brn, aren i/p, mnr micmic, occ-com carb incl, tr off wh liths, frm-mod hd, occ hd-v hd, sbbkly-sbfiss.

SANDSTONE: med lt gry, med gry, pl trnsp-trnsl, vf-med grs, pr srt, sbang -sbrnd, arg mtx, tr sli calc cmt, tr carb spks, occ micmic, pr vis por, no fluor.

KAOLANITIC SANDSTONE: off wh, pl gry, vf-f, occ med-crs lse grs, sbang, mnr mod wk sil cmt, abdt off wh kaol mtx, tr brn liths & carb spks, fri-lse, v pr vis & pr inf por, no fluor.



SILTY CLAYSTONE: dk gry, blk, dk
 brn, occ med brn, lt gry, aren i/p, com
 carb mat, mnr micmic, calc i/p, mod hd,
 occ hd-v hd, tr frm, sbblky-biky,
 occ sbfrss.

